

Geomagnetism package notes

FRANCOIS BERTIN

Contents

1. Introduction.....	1
2. Geomagnetism calculation.....	1
3. Spherical harmonics normalisation.....	2
4. Geotetic to geocentric transformation	4
Ellipse equation	4
Geotetic to geocentric transformation	5
Computational aspect	8
5. Base transformation.....	9
6. Geomagnetic field at North and South pole	10
North pole	10
South pole	12
7. Spherial harmonic coefficients.....	13
Gauss coefficients.....	13
Gauss coefficients secular variation	14
8. Exemples, benchmark	15
9. Other programs	21
10. Bibliography.....	22

1. Introduction

The package geomagnetim intends to serve pedagogical purpose rather to replace well established FORTRAN or C program developed by academic institutions. In contrast with these programs, which favor compactness and time execution, the geomagnetic package ,tentatively, focus on lisibility.

You can download geomagnetis using :

```
pip install geomagnetism
```

2. Geomagnetism calculation

As the terrestrial magnetic field obeys both $\nabla \mathbf{B} = 0$ and $\nabla \times \mathbf{B} = 0$, it can be shown that the magnetic field can be expressed as the gradient of a scalar potential V which satisfies the Laplace equation:

$$\Delta V = 0 \quad (0.1)$$

For a spherical geometry the geomagnetic potential is given by the spherical harmonic expansion (SH) (Stacey and Davis , Campbell 2007):

$$V(r, \theta, \phi, t) = a \sum_{n=1}^N \left(\frac{a}{r} \right)^{n+1} \sum_{m=0}^n \left[g_n^m(t) \cos(m\phi) + h_n^m(t) \sin(m\phi) \right] P_n^m(\cos(\theta)) \quad (0.2)$$

with:

$$P_n^m(x) = \begin{cases} \frac{1}{2^n n!} \frac{d^n}{dx^n} (x^2 - 1)^n & : m = 0 \\ \sqrt{\frac{2(n-m)!}{(n+m)!}} (1-x^2)^m \frac{1}{2^n n!} \frac{d^{n+m}}{dx^n} (x^2 - 1)^n & : m > 0 \end{cases} \quad (0.3)$$

g_n^m and h_n^m are the Gauss's coefficients. Note that the sum over n begins with the value $n = 1$ as the index $n = 0$ would correspond to a monopole. The dipole, quadrupole, octupole,... contribution correspond to $n = 1, 2, 3, \dots$. These coefficients varies with time and are tabulated (<https://www.ngdc.noaa.gov/IAIG/vmod/igrf.html>). The coefficient a is the mean radius of the earth (6371.2 km); r , the radial distance from the center of the Earth; θ , the geocentric colatitude; ϕ , the east longitude measured from the Greenwich. We note that the Condon-Shortley phase correction $(-1)^m$ is omitted in the definition of the associated Legendre polynomial and the polynomes are normalized using Schmidt quasi-normalization (Winch, Ivers et al. 2005). The relation $\mathbf{B} = -\nabla V$ leads to:

$$\begin{cases} X_c = \mathbf{B}_x = -B_\theta = \frac{1}{r} \frac{\partial V}{\partial \theta} = \sum_{n=1}^N \left(\frac{a}{r}\right)^{n+2} \sum_{m=0}^n [g_n^m \cos(m\phi) + h_n^m \sin(m\phi)] \frac{dP_{(s),n}^m(\cos \theta)}{d\theta} \\ Y_c = \mathbf{B}_y = B_\phi = \frac{-1}{r \sin \theta} \frac{\partial V}{\partial \phi} = \sum_{n=1}^N \left(\frac{a}{r}\right)^{n+2} \sum_{m=0}^n m [g_n^m \sin(m\phi) - h_n^m \cos(m\phi)] \frac{P_{(s),n}^m(\cos \theta)}{\sin \theta} \\ Z_c = \mathbf{B}_z = -B_r = \frac{\partial V}{\partial r} = \sum_{n=1}^N (n+1) \left(\frac{a}{r}\right)^{n+2} \sum_{m=0}^n [g_n^m \cos(m\phi) + h_n^m \sin(m\phi)] P_{(s),n}^m(\cos \theta) \end{cases} \quad (0.4)$$

Where \mathbf{B}_x , \mathbf{B}_y , \mathbf{B}_z are the field components respectively in the northward, eastward and downward directions. Theses components are expressed in the geocentric referential as recall by the index c

3. Spherical harmonics normalisation

Let define:

$$\begin{aligned} C_n^m(\theta, \phi) &\equiv P_{(s),n}^m(\cos \theta) \cos m\phi & : m = 0, 1, 2 \dots n \\ S_n^m(\theta, \phi) &\equiv P_{(s),n}^m(\cos \theta) \sin m\phi & : m = 1, 2 \dots n \end{aligned} \quad (0.5)$$

the Schmidt quasi-normalization conditions reads (Winch, Ivers et al. 2005):

$$\begin{aligned} \frac{1}{4\pi} \int_0^{2\pi} \int_0^\pi C_n^m(\theta, \phi) C_N^M(\theta, \phi) \sin \theta d\theta d\phi &= \frac{1}{2n+1} \delta_n^N \delta_m^M \\ \frac{1}{4\pi} \int_0^{2\pi} \int_0^\pi S_n^m(\theta, \phi) S_N^M(\theta, \phi) \sin \theta d\theta d\phi &= \frac{1}{2n+1} \delta_n^N \delta_m^M \\ \frac{1}{4\pi} \int_0^{2\pi} \int_0^\pi C_n^m(\theta, \phi) S_N^M(\theta, \phi) \sin \theta d\theta d\phi &= 0 \quad : \forall n, N, m, M \end{aligned} \quad (0.6)$$

The associated Legendre polynomial value can be generated by the scipy function $M, Mp = \text{lmn}(M, N, x)$ where:

$$\underline{\underline{\mathbf{P}}} = \begin{bmatrix} P_0^0 & P_1^0 & \dots & P_N^0 \\ 0 & P_1^1 & \dots & P_N^1 \\ \vdots & \vdots & \ddots & \vdots \\ 0 & 0 & \dots & P_N^M \end{bmatrix} \quad (0.7)$$

with :

$$P_n^m(x) = \frac{(-1)^m}{2^n n!} \sqrt{(1-x^2)^m} \frac{d^{n+m}}{dx^n} (x^2-1)^n \quad (0.8)$$

To obtain the normalize Legendre polynomials $P_{(s),n}^m$ we use:

$$\underline{\underline{\mathbf{P}}}_{(s)} = \underline{\underline{\mathbf{P}}} \odot \underline{\underline{\mathbf{N}}} \quad (0.9)$$

where \odot is the component-wise multiplication and :

$$N_{n,m} = \begin{cases} (-1)^m \sqrt{\frac{(2-\delta_m^0)(n-m)!}{(n+m)!}} & : n-|m| \geq 0 \\ 0 & : n-|m| < 0 \end{cases} \quad (0.10)$$

Note that other authors in geophysics use different normalization factors. Stacey (Stacey and Davis) use :

$$N_n^m = \begin{cases} (-1)^m \sqrt{(2-\delta_m^0)(2m+1)} \frac{(n-m)!}{(n+m)!} & : |m| \leq n \\ 0 & : |m| > n \end{cases} \quad (0.11)$$

The function `Norm_Schmidt(m, n)` computes the normalisation matrix (0.10)

The function `Norm_Stacey(m, n)` computes the normalisation matrix (0.11)

Exemples :

```
geo.Norm_Stacey(3,4)
>> array([[ 1.          ,  1.          ,  1.          ,  1.          ,  1.          ],
          [ 0.          , -1.73205081, -1.          , -0.70710678, -0.54772256],
          [ 0.          ,  0.          ,  0.64549722,  0.28867513,  0.16666667],
          [ 0.          ,  0.          ,  0.          , -0.13944334, -0.05270463]])
```

```
geo.Norm_Schmidt (3,4)
>> array([[ 1.          ,  1.          ,  1.          ,  1.          ,  1.          ],
          [ 0.          , -1.          , -0.57735027, -0.40824829, -0.31622777],
          [ 0.          ,  0.          ,  0.28867513,  0.12909944,  0.0745356 ],
          [ 0.          ,  0.          ,  0.          , -0.05270463, -0.01992048]])
```

4. Geotetic to geocentric transformation

The computation of the geomagnetic field is done in a geocentric coordinate system. So if we provide The geotetic coordinates we have to convert them into geocentric ones. In the following we deduce the transformation relation used in the function `geotetic_to_geocentric`.

Ellipse equation

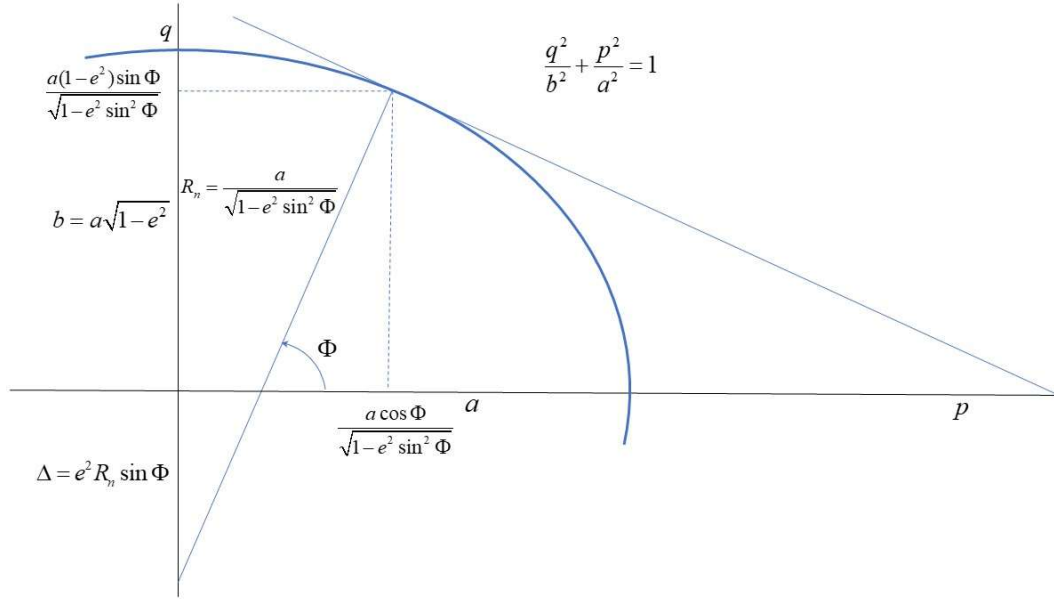


Figure 1 : Ellipse notation convention.

The equation of the ellipse reads :

$$\frac{q^2}{b^2} + \frac{p^2}{a^2} = 1 \quad (0.12)$$

The geotetic latitude Φ can be expressed through the derivative :

$$\cot \Phi = -\frac{dq}{dp} = \frac{b^2}{a^2} \frac{q}{p} \quad (0.13)$$

From (0.13) we can express q as :

$$q = p \frac{a^2}{b^2} \tan \Phi \quad (0.14)$$

Using (0.12) and (0.14) we obtain :

$$\begin{cases} p = \frac{a \cos \Phi}{\sqrt{1 - e^2 \sin^2 \Phi}} \\ q = \frac{a(1 - e^2) \sin \Phi}{\sqrt{1 - e^2 \sin^2 \Phi}} \end{cases} \quad (0.15)$$

The prime vertical curvature radius R_n can be deduced from p as :

$$\begin{aligned} R_n &= \frac{p}{\cos \Phi} = \frac{a}{\sqrt{1 - e^2 \sin^2 \Phi}} \\ R_n &= \frac{a^2}{\sqrt{a^2 - (a^2 - b^2) \sin^2 \Phi}} \end{aligned} \quad (0.16)$$

Using the prime vertical curvature we can re-express p and q as :

$$\begin{cases} p = R_n \cos \Phi \\ q = (1 - e^2) R_n \sin \Phi \end{cases} \quad (0.17)$$

Geotetic to geocentric transformation

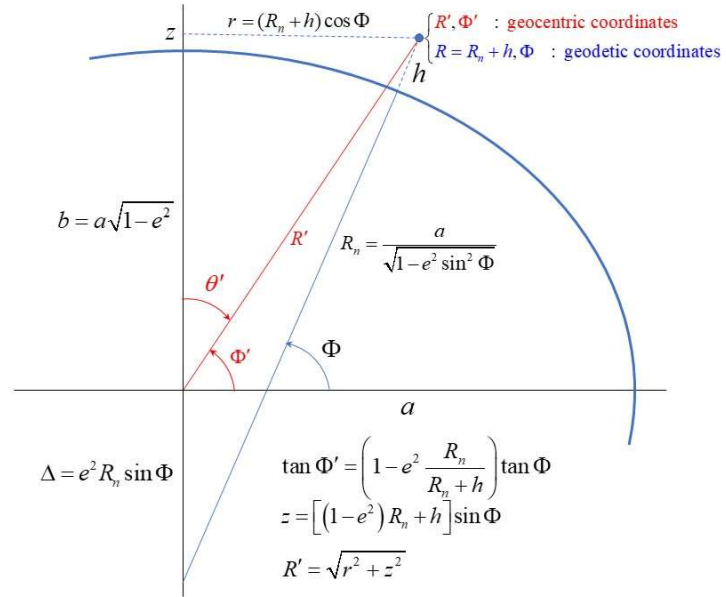


Figure 2 : Geotetic and geocentric notation convention.

Relation between the geotetic colatitude Φ and the geocentric colatitude Φ' :

Using the conventions of Figure 2 we have

$$\frac{\tan \Phi'}{\tan \Phi} = \frac{z}{z + \Delta} = \frac{(1 - e^2)R_n + h}{(1 - e^2)R_n + h + e^2 R_n} = 1 - e^2 \frac{R_n}{R_n + h} \quad (0.18)$$

The flattening is defined as follow:

$$f = \frac{a - b}{a} \quad (0.19)$$

The geodetic reference ellipsoids are specified by giving the reciprocal flattening f^{-1}

As usual the eccentricity reads:

$$e = \sqrt{1 - \frac{b^2}{a^2}} = \sqrt{f(2 - f)} \quad (0.20)$$

$$1 - e^2 = \frac{b^2}{a^2}$$

We can express z and r as :

$$\begin{cases} z = (R_n + h) \sin \Phi - \Delta = [(1 - e^2)R_n + h] \sin \Phi \\ r = (R_n + h) \cos \Phi \end{cases} \quad (0.21)$$

Using (0.21) the geocentric radius is equal to :

$$R' = \sqrt{z^2 + r^2} \quad (0.22)$$

Using (0.22) we can express the geocentric radius using the semi major and the semi minor axis. We obtain (Peddie 1982) :

$$R'^2 = \frac{h^2 + 2h\sqrt{a^2 - (a^2 - b^2)\sin^2 \Phi} + [a^4 - (a^4 - b^4)\sin^2 \Phi]}{a^2 - (a^2 - b^2)\sin^2 \Phi} \quad (0.23)$$

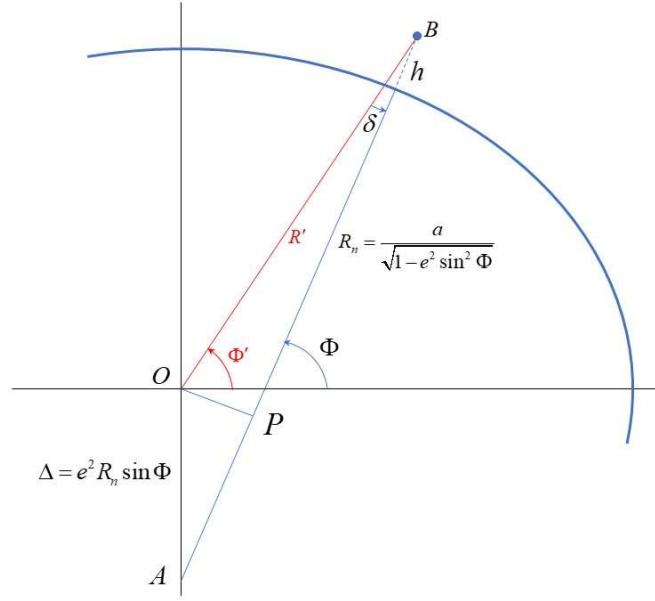


Figure 3 : Computation of $\cos \delta$ and $\sin \delta$.

Using (0.21) and (0.22), the geocentric colatitude can be deduced from :

$$\cos \theta = \frac{z}{\sqrt{r^2 + z^2}} = \frac{\sin \Phi}{\sqrt{\left[\frac{R_n + h}{(1 - e^2)R_n + h} \right]^2 \cos^2 \Phi + \sin^2 \Phi}} \quad (0.24)$$

The relation (0.24) can be expressed using the semi major and minor axis. Using (0.16), (0.20) we obtain (Peddie, 1982) :

$$\cos \theta = \frac{\sin \Phi}{\sqrt{c \cos^2 \Phi + \sin^2 \Phi}}; \quad c = \left[\frac{a^2 + h\sqrt{a^2 - (a^2 - b^2)\sin^2 \Phi}}{b^2 + h\sqrt{a^2 - (a^2 - b^2)\sin^2 \Phi}} \right]^2 \quad (0.25)$$

Using the triangle AOB of the Figure 3 we obtain the relation :

$$\Delta \sin \Phi + R' \cos \delta = R_n + h \quad (0.26)$$

After rearranging :

$$\cos \delta = \frac{1}{R'} \left[h + R_n(1 - e^2) \right] \quad (0.27)$$

Using (0.16) we have :

$$\boxed{\cos \delta = \frac{1}{R'} \left[h + \frac{a^2}{R_n} \right]} \quad (0.28)$$

The length of OP is equal to

$$R' \sin \delta = \Delta \cos \Phi \quad (0.29)$$

So :

$$\sin \delta = \frac{R_n}{R'} e^2 \cos \Phi \sin \Phi \quad (0.30)$$

Computational aspect

The function `geodetic_to_geocentric(ellipsoid, co_latitude, height)` computes the geocentric and the geocentric colatitude using respectively (0.22) and (0.18). The angle

$$\delta = \theta' - \theta \quad (0.31)$$

between the geocentric and the geotetic colatitude is also computed (Figure 4).

The routine uses the tuple `ellipsoid = (a, f-1)`. Depending on the selected convention ellipsoid can be set to

`GRS80 = geo.geomagnetism.GRS80`

`WGS84 = geo.geomagnetism.WGS84`

Exemple :

```
r_geocentric, co_latitude_geocentric, delta =
geo.geodetic_to_geocentric(geo.geomagnetism.WGS84 , 170, 100_000)
>> (6457402.34844737, 2.965925285681976, -0.0011344427083841424)
```

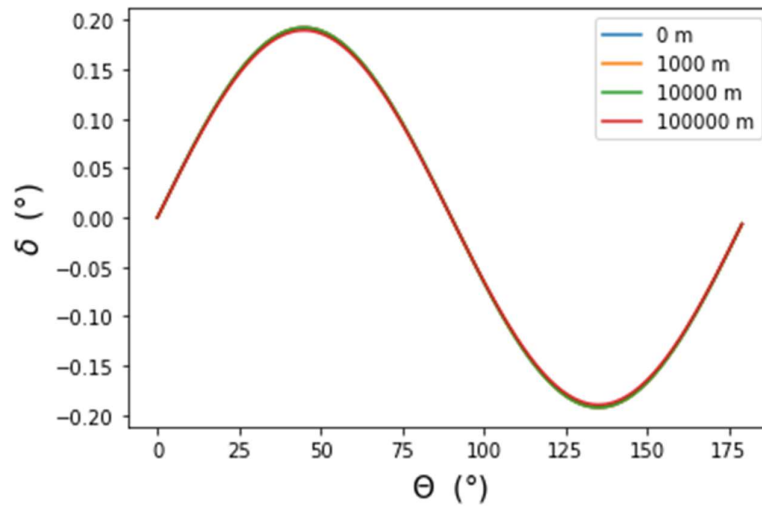


Figure 4 : Variation of δ versus the geotetic colatitude θ and the height h .

The function `geodetic_to_geocentric_IGRF13(ellipsoid, co_latitude, height)` is a translation of a FORTRAN (<https://www.ngdc.noaa.gov/IAGA/vmod/igrf.html>) where the authors use (0.23), (0.28), (0.30) to compute the geocentric radius the cosine and sine of the angle δ .

The function use the tuple ellipsoid=(a,b). Depending on the selected convention ellipsoid can be set to

GRS80_ = geo.geomagnetism.GRS80_
WGS84_ = geo.geomagnetism.WGS84_

5. Base transformation

Passing from geocentric to geotetic referential the magnetic field undergoes the following transformation :

$$\begin{pmatrix} B_x \\ B_y \\ B_z \end{pmatrix}_{\text{geodetic}} = \begin{bmatrix} \cos \delta & 0 & -\sin \delta \\ 0 & 1 & 0 \\ \sin \delta & 0 & \cos \delta \end{bmatrix} \begin{pmatrix} B_x \\ B_y \\ B_z \end{pmatrix}_{\text{geocentric}} \quad (0.32)$$

with $\delta = \theta' - \theta = \Phi - \Phi'$ (Figure 5). Using Peddie notation (Peddie, 1982) we have :

$$\begin{pmatrix} X \\ Y \\ Z \end{pmatrix} = \begin{bmatrix} \cos \delta & 0 & -\sin \delta \\ 0 & 1 & 0 \\ \sin \delta & 0 & \cos \delta \end{bmatrix} \begin{pmatrix} X_c \\ Y_c \\ Z_c \end{pmatrix} \quad (0.33)$$

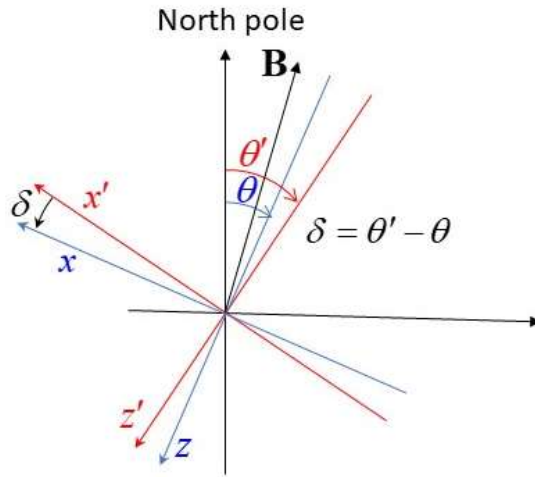


Figure 5 : Variation of δ versus the geotetic colatitude θ and the height h .

Using the notations of the Figure 6, the geomagnetic horizontal intensity H , total intensity F , declination D and inclination I can be obtained from :

$$\begin{cases} H = \sqrt{X^2 + Y^2} \\ F = \sqrt{H^2 + Z^2} \\ D = \text{atan } 2(Y, X) \\ I = \text{atan } 2(Z, H) \end{cases} \quad (0.34)$$

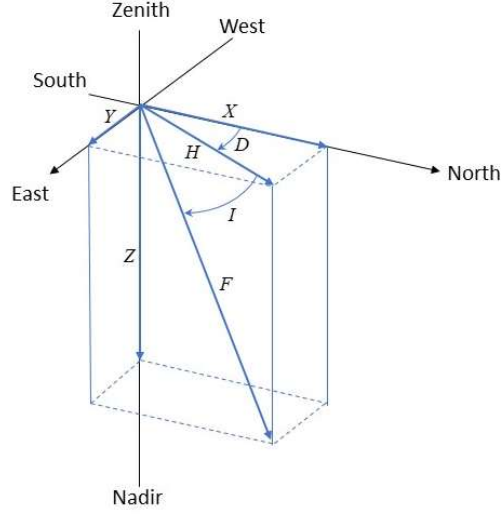


Figure 6 : Geomagnetic conventions and notations from (Chullia, 2020)

6. Geomagnetic field at North and South pole

North pole

For $\theta = 0$ we have to evaluate

$$\frac{dP_{(s),n}^m(\cos \theta)}{d\theta}, \frac{P_{(s),n}^m(\cos \theta)}{\sin \theta}, P_{(s),n}^m(\cos \theta) \quad (0.35)$$

The associate Legendre polynomial can be defined as:

$$P_n^m(x) = (1 - x^2)^{\frac{m}{2}} \frac{d^m}{dx^m} P_n(x) \quad (0.36)$$

From (0.36) we deduce that $\frac{P_n^m(\cos \theta)}{\sin \theta}$ is not null if and only if $m = 1$. If that condition is fulfilled we have :

$$\frac{P_n^1(\cos \theta)}{\sin \theta} \xrightarrow{\theta \rightarrow 0} \frac{d}{dx} P_n(x) \Big|_{x=1} \quad (0.37)$$

From the differential equation :

$$(1-x^2) \frac{d^2}{dx^2} P_n(x) - 2x \frac{d}{dx} P_n(x) + n(n+1) P_n(x) = 0 \quad (0.38)$$

We deduce :

$$\frac{d}{dx} P_n(1) = \frac{n(n+1)}{2}, \quad \frac{d}{dx} P_n(-1) = (-1)^{n-1} \frac{n(n+1)}{2} \quad (0.39)$$

Taking into account (0.39) and the Schmidt normalisation coefficient (0.10) we obtain :

$$\frac{P_{(s),n}^m(\cos \theta)}{\sin \theta} \xrightarrow{\theta \rightarrow 0} \delta_1^m \sqrt{\frac{n(n+1)}{2}} \quad (0.40)$$

From (0.36) we deduce :

$$P_{(s),n}^m(1) = \delta_m^0 \quad (0.41)$$

Concerning the derivative of the Legendre polynomials we have at the right boundary:

$$\left. \frac{dP_n^m(x)}{dx} \right|_{x=1} = \begin{cases} \frac{n(n+1)}{2} & \text{if } m=0 \\ \infty & \text{if } m=1 \\ -\frac{(n-1)n(n+1)(n+2)}{4} & \text{if } m=2 \\ 0 & \text{if } m=3,4,\dots \end{cases} \quad (0.42)$$

Using (0.42) we obtain :

$$\left. \frac{dP_n^m(\cos \theta)}{d\theta} \right|_{\theta=0} = \delta_1^m \sqrt{\frac{n(n+1)}{2}} \quad (0.43)$$

Aggregating (0.41), (0.40), (0.43) we obtain :

$$\begin{cases} X_c(0) = \sum_{n=1}^N \left(\frac{a}{r}\right)^{n+2} \sqrt{\frac{n(n+1)}{2}} g_n^1 \cos(\phi) + \sum_{n=1}^N \left(\frac{a}{r}\right)^{n+2} \sqrt{\frac{n(n+1)}{2}} h_n^1 \sin(\phi) \\ Y_c(0) = \sum_{n=1}^N \left(\frac{a}{r}\right)^{n+2} \sqrt{\frac{n(n+1)}{2}} g_n^1 \sin(\phi) - \sum_{n=1}^N \left(\frac{a}{r}\right)^{n+2} \sqrt{\frac{n(n+1)}{2}} h_n^1 \cos(\phi) \\ Z_c(0) = \sum_{n=1}^N (n+1) \left(\frac{a}{r}\right)^{n+2} g_n^0 \end{cases} \quad (0.44)$$

South pole

For or for $\theta = \pi$ we have :

$$P_{(s),n}^m(-1) = \delta_m^0 (-1)^n \quad (0.45)$$

$$\frac{P_{(s),n}^m(\cos \theta)}{\sin \theta} \xrightarrow{\theta \rightarrow \pi} \delta_1^m (-1)^n \sqrt{\frac{n(n+1)}{2}} \quad (0.46)$$

$$\left. \frac{dP_n^m(x)}{dx} \right|_{x=-1} = \begin{cases} (-1)^{n+1} \frac{n(n+1)}{2} & \text{if } m=0 \\ (-1)^n \infty & \text{if } m=1 \\ (-1)^n \frac{(n-1)n(n+1)(n+2)}{4} & \text{if } m=2 \\ 0 & \text{if } m=3,4,\dots \end{cases} \quad (0.47)$$

Aggregating (0.45), (0.46), (0.47) we have :

$$\begin{cases} X_c(0) = \sum_{n=1}^N \left(-\frac{a}{r}\right)^{n+2} \sqrt{\frac{n(n+1)}{2}} g_n^1 \cos(\phi) + \sum_{n=1}^N \left(-\frac{a}{r}\right)^{n+2} \sqrt{\frac{n(n+1)}{2}} h_n^1 \sin(\phi) \\ Y_c(0) = \sum_{n=1}^N \left(-\frac{a}{r}\right)^{n+2} \sqrt{\frac{n(n+1)}{2}} g_n^1 \sin(\phi) - \sum_{n=1}^N \left(-\frac{a}{r}\right)^{n+2} \sqrt{\frac{n(n+1)}{2}} h_n^1 \cos(\phi) \\ Z_c(0) = -\sum_{n=1}^N (n+1) \left(-\frac{a}{r}\right)^{n+2} g_n^0 \end{cases} \quad (0.48)$$

In geomagnetism we define the constant $\text{EPS} = 1.0\text{e-}5^\circ$ such that :

- If $\text{EPS} < \text{colatitude} < 180 - \text{EPS}$ we apply (0.4) `field_computation(r_a, M, Mp, phi, theta, dic_g, dic_h, N, mat_rot)`
- If $\text{colatitude} < \text{EPS}$ we apply (0.44) `field_computation_pole(r_a, phi, theta, dic_g, dic_h, N, mat_rot, EPS)`
- If $\text{colatitude} > 180 - \text{EPS}$ we apply **Erreur ! Source du renvoi introuvable.** `field_computation_pole(r_a, phi, theta, dic_g, dic_h, N, mat_rot, EPS)`

The Figure 7 shows the tiny discontinuities in the geomagnetic fields around EPS.

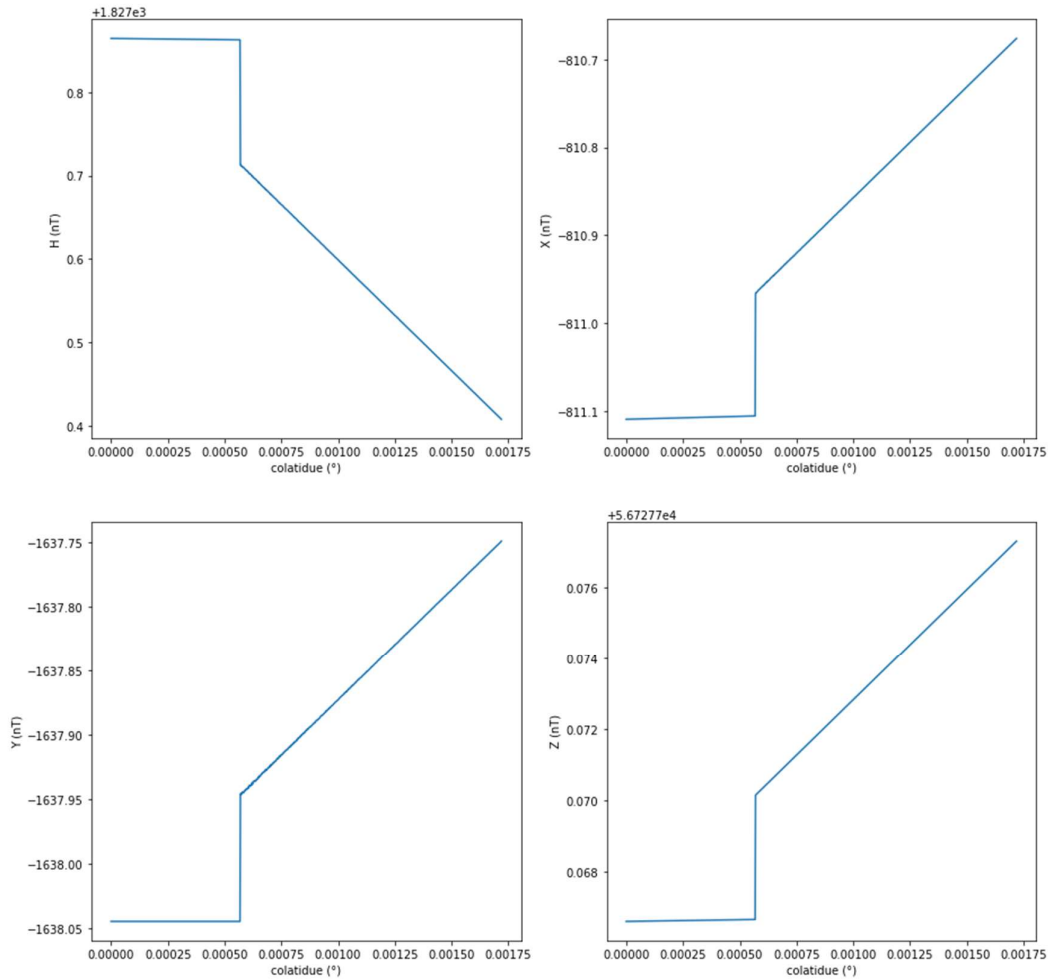


Figure 7 : Discontinuities in the field computation at colatitude = EPS.

7. Spherial harmonic coefficients

Gauss coefficients

The main ingredient for the computing of the geomagnetic field are the spherical harmonic coefficients g_m^n and h_m^n . These coefficients depend on the geocentric latitude on the longitude, and on the time. The package `geomagnetism` provide several functions to read tabulated coefficients

```
import geomagnetism as geo
file = "IGRF13.COF" # downloaded from
https://www.ngdc.noaa.gov/IAGA/vmod/coeffs/igrf13coeffs.txt
dic_dic_h, dic_dic_g, dic_dic_SV_h, dic_dic_SV_g, dic_N, Years=
geo.read_IGRF13_COF(file)
m=1
n=3
years="1965"
h = dic_dic_h[years][(m,n)]
print(f'Spherial harmonic coefficients h(m={m},n={n}) for year = {years} :{h}')
>>Spherial harmonic coefficients h(m=1,n=3) for year = 1965 :-404.0
```

Tableau 1 : Gauss coefficients from different sources.

File name	Deb	End	Source
WMM_2020.COF	2020	2020	https://www.ngdc.noaa.gov/geomag/WMM/soft.shtml
WMM_2015.COF	2015	2015	https://www.ngdc.noaa.gov/geomag/WMM/soft.shtml
IGRF13.COF	1900	2020	https://www.ngdc.noaa.gov/AGA/vmod/coeffs/igrf13coeffs.txt
IGRF13coeffs.txt	1900	2020	https://www.ngdc.noaa.gov/AGA/vmod/coeffs/igrf13coeffs.txt
FORTAN_1900_1995.txt	1900	1995	https://www.ngdc.noaa.gov/AGA/vmod/igrf13.f

IGRF13.COF and IGRF13coeffs.txt contain the same data with a different format.

Gauss coefficients secular variation

As the Gauss coefficients of the geomagnetic field vary with time their secular variation \dot{g}_n^m and \dot{h}_n^m expressed in nT/year are tabulated. We have :

$$\begin{cases} g_m^n(t) = g_m^n(t_0) + \dot{g}_m^n(t_0)(t - t_0) \\ h_m^n(t) = h_m^n(t_0) + \dot{h}_m^n(t_0)(t - t_0) \end{cases} \quad (0.49)$$

The secular variation are stored in the dictionaries `dic_dic_sv_h`, `dic_dic_sv_g`. Using these coefficients it is straightforward to compute the secular variation of the geomagnetic field components. We have (Chullia, 2020):

$$\begin{cases} \dot{X}_c = \dot{\mathbf{B}}_x = -\dot{B}_\theta = \frac{1}{r} \frac{\partial \dot{V}}{\partial \theta} = \sum_{n=1}^N \left(\frac{a}{r} \right)^{n+2} \sum_{m=0}^n \left[\dot{g}_n^m \cos(m\phi) + \dot{h}_n^m \sin(m\phi) \right] \frac{dP_{(s),n}^m(\cos \theta)}{d\theta} \\ \dot{Y}_c = \dot{\mathbf{B}}_y = \dot{B}_\phi = \frac{-1}{r \sin \theta} \frac{\partial \dot{V}}{\partial \phi} = \sum_{n=1}^N \left(\frac{a}{r} \right)^{n+2} \sum_{m=0}^n m \left[\dot{g}_n^m \sin(m\phi) - \dot{h}_n^m \cos(m\phi) \right] \frac{P_{(s),n}^m(\cos \theta)}{\sin \theta} \\ \dot{Z}_c = \dot{\mathbf{B}}_z = -\dot{B}_r = \frac{\partial \dot{V}}{\partial r} = \sum_{n=1}^N (n+1) \left(\frac{a}{r} \right)^{n+2} \sum_{m=0}^n \left[\dot{g}_n^m \cos(m\phi) + \dot{h}_n^m \sin(m\phi) \right] P_{(s),n}^m(\cos \theta) \end{cases} \quad (0.50)$$

$$\begin{pmatrix} \dot{X} \\ \dot{Y} \\ \dot{Z} \end{pmatrix} = \begin{bmatrix} \cos \delta & 0 & -\sin \delta \\ 0 & 1 & 0 \\ \sin \delta & 0 & \cos \delta \end{bmatrix} \begin{pmatrix} \dot{X}_c \\ \dot{Y}_c \\ \dot{Z}_c \end{pmatrix} \quad (0.51)$$

Using (0.34) we obtain¹ :

¹ We use $\frac{\partial}{\partial x} \operatorname{atan} 2(y, x) = -\frac{y}{x^2 + y^2}$, $\frac{\partial}{\partial y} \operatorname{atan} 2(y, x) = \frac{x}{x^2 + y^2}$

a)

$$\left\{ \begin{array}{l} \dot{H} = \frac{X\dot{X} + Y\dot{Y}}{H} \\ \dot{F} = \frac{X\dot{X} + Y\dot{Y} + Z\dot{Z}}{F} \\ \dot{I} = \frac{H\dot{Z} - Z\dot{H}}{F^2} \\ \dot{D} = \frac{X\dot{Y} - Y\dot{X}}{H^2} \end{array} \right. \quad (0.52)$$

8. Exemples, benchmark

Using the latitude, longitude, time and height above the ellipsoid given in Tableau 2, the shows a results comparison of the geomagnetic field element obtained by both the geomagnetism package and those extract from the Table 3b High-precision numerical example (Chullia, 2020).

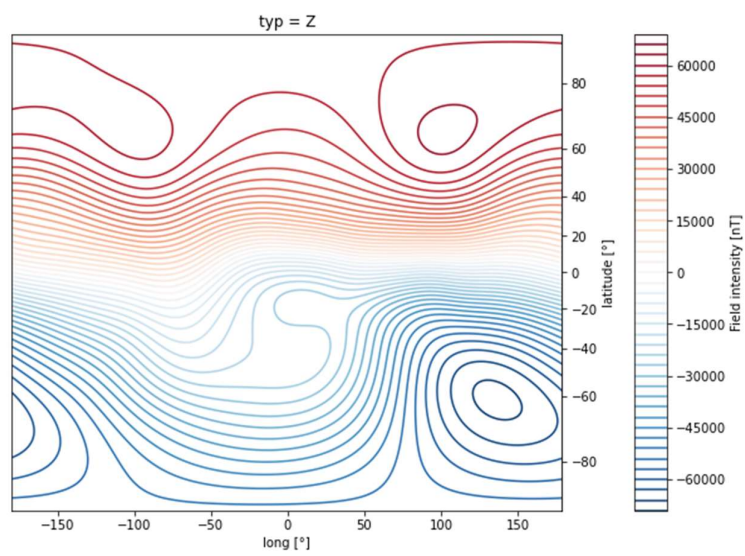
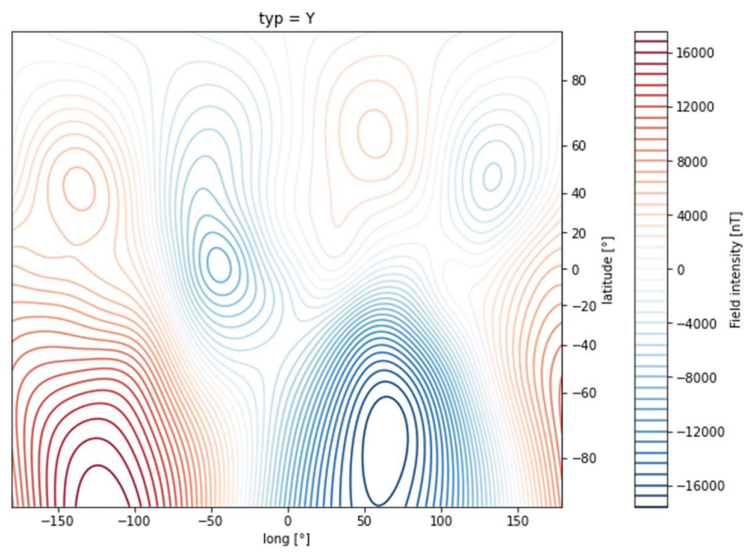
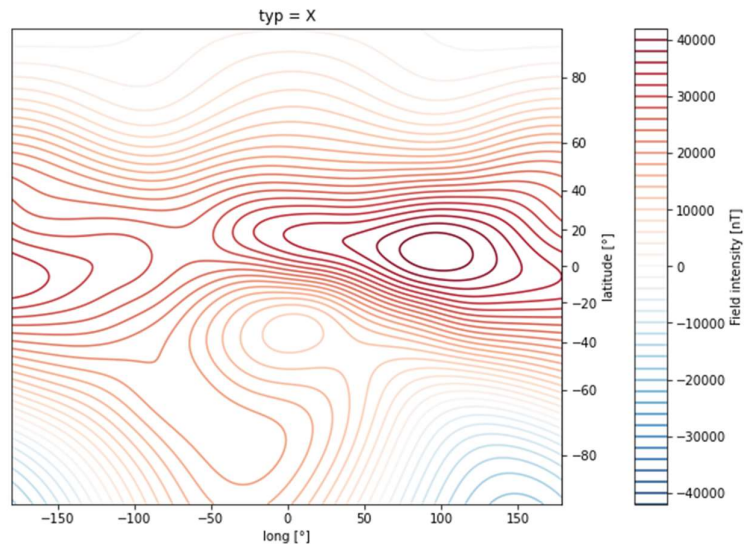
Tableau 2 : parameters values used for the benchmark

Time	2022.5000 0000	yr
Height-above-Ellipsoid	100.0000 0000	km
Latitude	-80.0000 0000	deg
Longitude	240.0000 0000	deg

Tableau 3 : comparison of the geomagnetic field element obtained by both the geomagnetism package and those extract from the Table 3b High-precision numerical example (Chullia, 2020)

	geomagnetism	WMM test value for 2020	relative error	unit
D	68.5538905649841581	68.5538905643625469	0.000000000090675	°
Dd	-0.0921756586115966	-0.0921756567227481	0.0000000204918372	°/yr
F	52235.3588449608359952	52235.3588449607996154	0.0000000000000007	nT
Fd	-78.0481471752882783	-78.0481471753000022	-0.0000000000001502	nT/yr
H	15904.1391483372881339	15904.1391483372990479	-0.0000000000000007	nT
Hd	11.5518244234884691	11.5518244234999994	-0.0000000000009981	nT/yr
I	-72.2736738948613606	-72.2736738961215934	-0.000000000174370	°
Id	0.0406672571772073	0.0406672551433468	0.0000000500122385	°/yr
X	5814.9658886214674567	5814.9658886215001985	-0.0000000000000056	nT
Xd	28.0381961826633521	28.0381961826999984	-0.000000000013070	nT/yr
Y	14802.9663839327658934	14802.9663839328004542	-0.0000000000000023	nT
Yd	1.3970624624335226	1.3970624624000001	0.000000000239950	nT/yr
Z	-49755.3119939183306997	-49755.3119939183015958	0.0000000000000006	nT
Zd	85.6309533031287344	85.6309533031000001	0.0000000000003356	nT/yr

Using the function `grid_geomagnetic(colatitudes, longitudes, height=0, Date={"mode": "dec", "year": 2020.0})` we build two xarrays containing the cartography of the geomagnetic field components. The Figure 8 shows the isolines of geomagnetic field components. We have used Miller projection. These results are in good agreement with those of Chullia (Chullia, 2020).



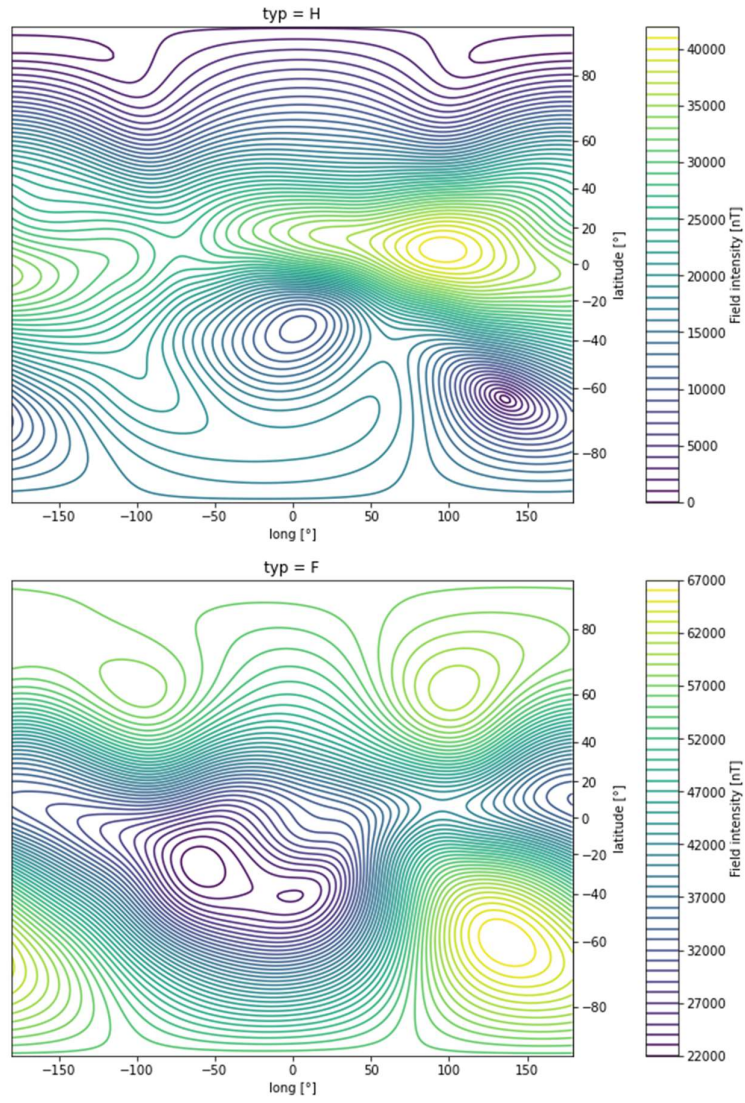


Figure 8 : Isovalues of the magnitude of the geomagnetic field components X , Y , Z and intensities H , F . We use the convention of Figure 6, and the Miller projection.

The Figure 9 shows the isovalues of the declination and inclination of the geomagnetic field.

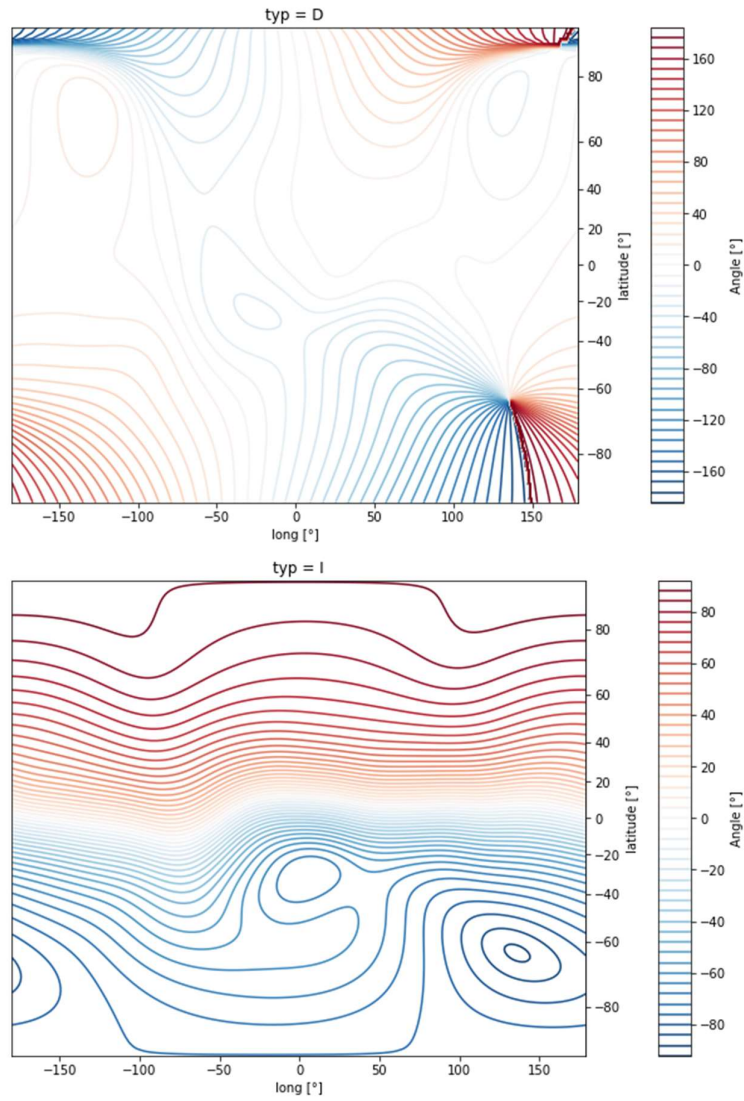
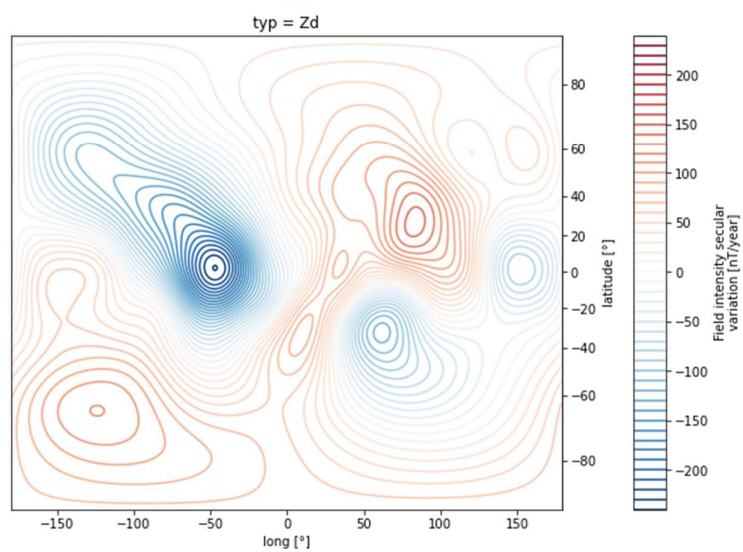
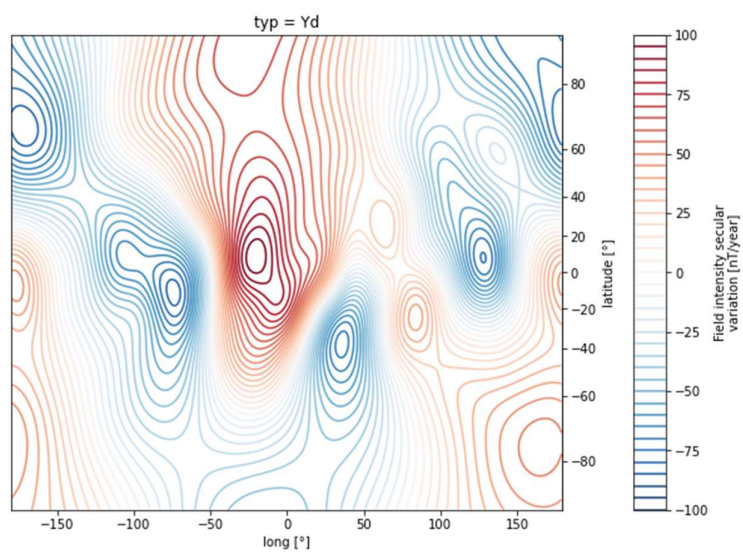
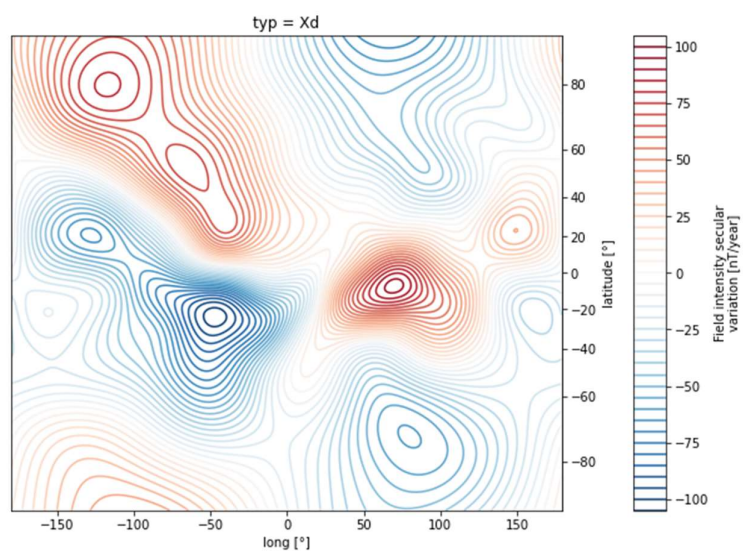


Figure 9 : Isovalues of the magnitude of the geomagnetic declination, D , and inclination, I . We use the convention of Figure 6, and the Miller projection.



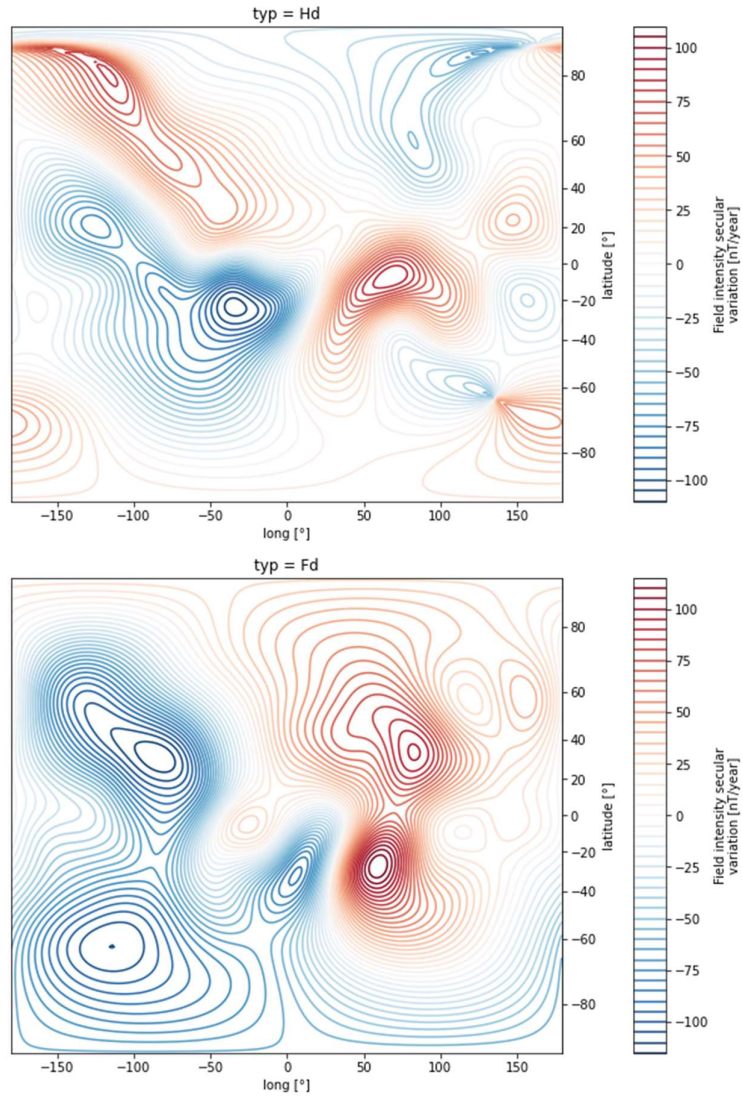


Figure 10 : Isovalues of the magnitude of the secular variation of the geomagnetic field components X, Y, Z and intensities H, F. We use the convention of Figure 6, and the Miller projection.

The Figure 9 shows the isovalues of the declination and inclination of the geomagnetic field.

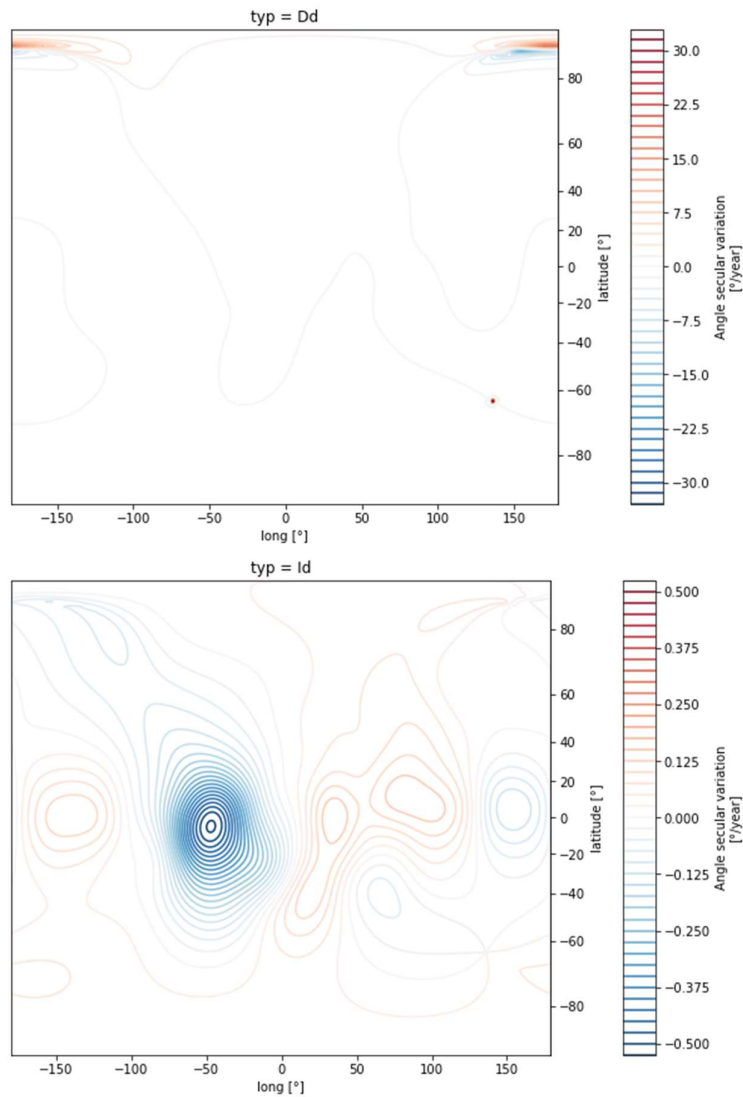


Figure 11 : Isovalues of the magnitude of these secular variation of the geomagnetic declination, D , and inclination, I . We use the convention of Figure 6, and the Miller projection.

9. Other programs

- In line calculators

<https://www.ngdc.noaa.gov/geomag/calculators/magcalc.shtml>

<http://wdc.kugi.kyoto-u.ac.jp/igrf/gggm/index.html>

permits the computation of the magnetic declination.

- a FORTRAN code available can be downloaded from :

<https://www.ngdc.noaa.gov/IAGA/vmod/igrf.html> .

Quote: "This code is a synthesis routine for the 13th generation IGRF as agreed in December 2019 by IAGA Working Group V-MOD. It is valid 1900.0 to 2025.0 inclusive. Values for dates from 1945.0 to 2015.0 inclusive are definitive, otherwise they are non-definitive. Reference radius remains as 6371.2 km - it is NOT the mean radius (= 6371.0 km) but 6371.2 km is what is used in determining the coefficients.'

- a C code available along with the Geomag 7.0 software (Windows version) :

<https://www.ngdc.noaa.gov/IAGA/vmod/igrf.html>

- a PYTHON code :

<https://pypi.org/project/geomag/#files>

10. Bibliography

Campbell, W. H. (2007). Introduction to Geomagnetic Fields Cambridge University Press.

Chullia, A et al. (2020) "The US/UK World Magnetic Model for 2020-2025: Technical Report, National Centers for Environmental Information, NOAA"

Peddie, N. W. (1982). "International Geomagnetic Reference Field : the third generation." J. Geomag. Geoelectr **34**: 309-326.

Stacey, F. D. and P. M. Davis Physics of the Earth, Cambridge University Press.

Winch, D. E., et al. (2005). "Geomagnetism and Schmidt quasi-normalization." Geophys. J. Int. **160**: 487-454.