

1. Grapa

User manual

Table of contents

1. Grapa	1
User manual	1
2. General description	2
2.1. Description of Grapa	2
2.2. Features overlook	2
3. Installation	3
3.1. Prerequisites	3
3.2. Installation	3
3.3. Getting started	3
4. General organization of the package	4
5. Graph object	5
5.1. Keywords to Graph	5
6. Curve object	8
6.1. Provided Curve child classes	8
6.2. Keywords to Curve	10
6.3. Automated data processing scripts	13
6.4. Load all files from one folder	13
6.5. JV data fit cell-by-cell	13
6.6. JV data fit separately	13
6.7. JV sample maps:	13
6.8. JV boxplots	13
6.9. Processing of C-V data temperature series	13
6.10. Processing of C-f data temperature series	14
7. Configuration file	15
8. How to read my own data files ?	16
8.1. Example:	16
9. How to define my own Curve type ?	18
9.1. Example	18
10. A few more details...	19
10.1. CurveSpectrum	19

Last update: 15.06.2018, together with grapa v0.5.2.4

1.

2. General description

2.1. Description of Grapa

Grapa is a python package providing a graphical interface and the underlying code dedicated to the visualization, analysis and presentation of scientific data, with a focus on photovoltaic research.

A wide range of data formats can be loaded by default. The produced graphs are saved both as graphical objects and as text files for later modifications.

The data analysis functions currently focus on photovoltaics and semiconductor material science. Advanced analysis or fitting functions are notably provided for the following characterization techniques: EQE, JV, C-V, C-f, TRPL, SIMS (list not exhaustive).

The software has extended capabilities for advanced plotting, and can be used for creating high-quality figures for scientific publications.

Last, the user can add to the software and to the graphical interface his own specific data loading functions as well new data types and analysis functions, with no modification of the existing code.

Grapa stands for “GRAPhing and Photovoltaics Analysis”.

Cheers!

2.2. Features overview

- Open and merge a wide range of experimental data. Data import possible from clipboard.
- Graphical data presentation and graph customisation.
- Graph export in various file formats with user-defined dpi. Additionally, create a .txt file containing the raw data for later modifications.
- The supported image formats are the one supported by the savefig function of matplotlib. .emf is also supported, provided a path to an inkscape executable is provided in the config.txt file.
- Drop-down menu to switch between data-relevant views (e.g. log-view for JV data, Tauc plot for EQE)
- Drop-down menu to switch between linear or logarithmic data visualisation.
- A data picker allows selecting and storing chosen data points.
- Can colorize a graph using color gradients.
- Some data types can be fitted. The parameters of the fitted curves can be modified afterwards.
- Data can be loaded from other files or from clipboard, then converted to the desired data type to benefit from data visualisation and processing and fitting options.

3. Installation

3.1. Prerequisites

Grapa was developed using the Winpython environment, with versions corresponding to python 3.4 and 3.5. Retrocompatibility with earlier versions of python is not ensured.

Grapa was developed using matplotlib 1.5 and should be compatible with version 2.0 and later.

3.2. Installation

There are several options to install grapa. The easiest is certainly

```
pip install grapa
```

Alternatively, the source can be retrieved from the development page on github. Download the latest release and place its content in a folder named “grapa” somewhere on your hard drive, and can be run with your favorite python distribution.

<https://github.com/carronr/grapa>

3.3. Getting started

The software graphical user interface GUI can be started by executing the function

```
import grapa
grapa.grapa()
```

Grapa can also be used in scripts. Just above the console, a checkbox "Commands in console" should help you to get started with scripting with grapa.

Enjoy!

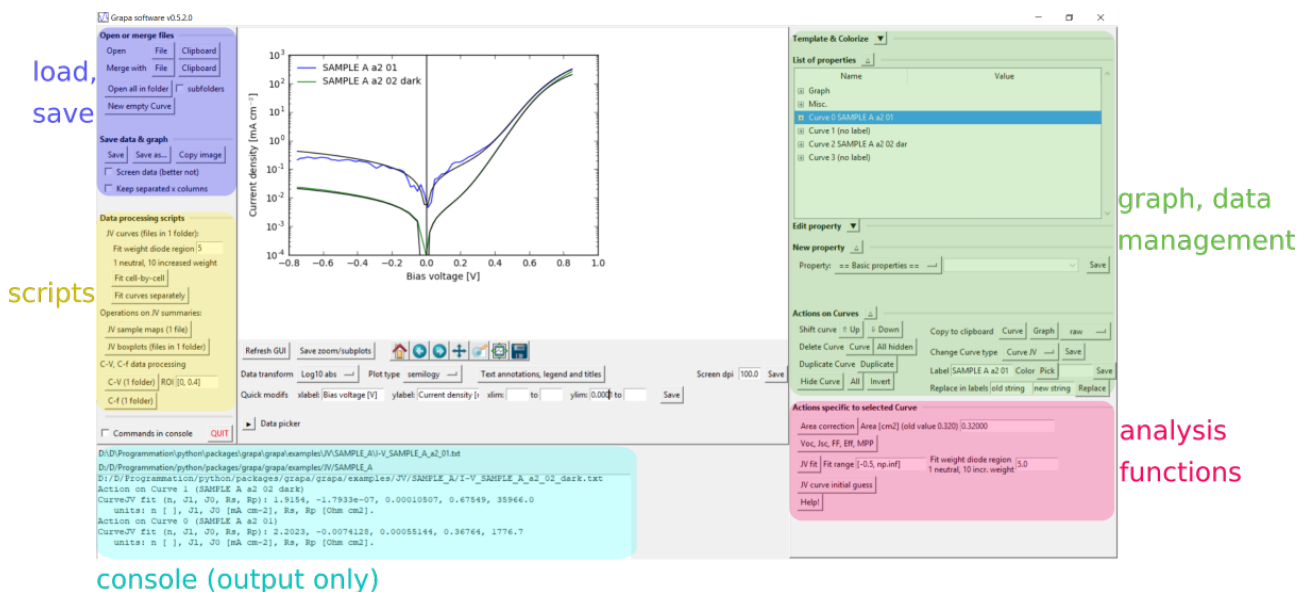
4. General organization of the package

The grapa packages comes with a graphical user interface (GUI), which allows handling most features of the package. Most matplotlib plotting methods are supported, as well as insets and subplots.

Using grapa in python code allows further customization of the produced graphs. Notably some matplotlib functions are not fully supported by the package. The Graph.plot() method returns the produced figure and axes for further modifications. Existing figures and axes can as well be provided.

The central object of the package is the Graph object. A graph is stored in a Graph object. The Graph class can be thought as a combination of a dict storing plotting information (axes, text annotations, etc.) together with a list of Curves which stores the data and the corresponding plotting information (color, aspect, etc.).

The interfaces are organized as to handle pairs of (x,y) vector data, although this might not always be true.



5. Graph object

The Graph object can notably plot and export itself.

As provided grapa can open a range of file formats. Just have a try on your own files, grapa might be able to parse it if the data are organized column-wise. Otherwise child classes of Graph can be implemented in order to read your own files (see the corresponding section of this howto)

5.1. Keywords to Graph

A Graph object notably contains a dict storing information related to plotting. Below is a list of possible keywords arranged by categories, with a brief explanation of the possible values and examples.

== Figure ==

figsize	Figure size (inch). (6.0, 4.0)
subplots_adjust	Margins (relative to figure). 0.15 (bottom only), [0.125, 0.1, 0.9, 0.9] left,b,r,top, [1,1,5,3.5,'abs']
dpi	Resolution dots-per-inch. 300
fontsize	Font size of titles, annotations, etc. 12
title	Graph title, based on ax.set_title(). My data ['A dataset', {'color':'r'}]

== Axes ==

xlim	Limits of x axis, based on ax.set_xlim(). [2,9] ['',4]
ylim	Limits of y axis, based on ax.set_ylim(). [0,100] [0,'']
xlabel	Label of x axis, based on ax.set_xlabel(). Axis x [unit] ['My label', {'size':6, 'color':'r'}]
ylabel	Label of y axis, based on ax.set_ylabel(). Axis y [unit] ['My label', {'size':6, 'color':'r'}]
xticksstep	Value difference between ticks on x axis, or ticks positions. Loosely based on ax.xaxis.set_ticks() 0.01 [0,1,2]
yticksstep	Value difference between ticks on y axis, or ticks positions. Loosely based on ax.yaxis.set_ticks() 0.01 [0,1,2]

xticklabels	Customized ticks. First is a list of values, then a list of labels, then possibly options. Loosely based on plt.xticks() [[0,1], ['some', 'value']] [None, None, {'rotation':45, 'size': 6, 'color':'r'}]"
yticklabels	Customized ticks. First is a list of values, then a list of labels, then possibly options. Loosely based on plt.yticks() [[0,1], ['some', 'value']] [None, None, {'rotation':45, 'size': 6, 'color':'r'}]"
xlabel_coords	Position of xlabel, based on ax.xaxis.set_label_coords(). -0.1 [0.5, -0.15]
ylabel_coords	Position of ylabel, based on ax.yaxis.set_label_coords(). -0.1 [-0.1, 0.5]

== Legends ==

legendproperties	Position, or keywords to ax.legend() best sw {'bbox_to_anchor':(0.2,0.8), 'ncol':2, 'fontsize':8}
legendtitle	Legend title Some title ['Some title', {'size':25}]

== Annotations ==

axhline	Horizontal line(s), based on ax.axhline(). 0 [-1, 1]
axvline	Vertical line(s), based on ax.axvline(). 0 [-1, 1]
text	Annotations, use GUI window if possible. Text, textxy, textargs must be elements, or list with same number of elements. Some text ['Here', 'There']
textxy	Use GUI window if possible. (0.05, 0.95) [(0.2, 0.3), (0.8, 0.9)]
textargs	Use GUI window if possible. {'fontsize':15} [{'horizontalalignment': 'right', 'xytext': (0.4, 0.65), 'arrowprops': {'shrink': 0.05}, 'xy': (0.46, 0.32)}, {}]

== Secondary axes ==

twinx_xlabel	Secondary x axis label. Other axis x [unit] ['My label', {'size':6, 'color':'r'}]
twinx_ylabel	Secondary y axis label. Other axis x [unit] ['My label', {'size':6, 'color':'r'}]
twinx_xlim	Secondary x axis limits. [2, 9] ['', 4]
twinx_ylim	Secondary y axis limits. [0, 100] [0, '']

== Misc ==

alter	Data transform keyword, specific to the type of manipulated data. Linear ['nmeV', 'tauc']
typeplot	General graph plotting instruction, based on ax.set_xscale() and ax.set_yscale(). plot semilogx
arbitraryfunctions	A list of instructions. Each instruction is a list as: [method of ax, list of arguments, dict of keyword arguments] [['xaxis.set_ticks', [[1.5, 5.5]], {'minor':True}], ['set_xticklabels', [['a','b']], {'minor':True}]] [['set_axis_off', [], {}]] [['yaxis.set_major_formatter', ['StrMethodFormatter({x:.2f})'], {}]] [['xaxis.set_minor_locator', ['MultipleLocator(0.5)'], {}]]

6. Curve object

A Curve object contains the data as well as a dict storing information dedicated to the Curve, notably plotting information.

Child classes of Curve can be implemented in order to provide you the suitable data analysis tools.

A list of possible keywords to the Curves is presented below.

6.1. Provided Curve child classes

Parsing of several file formats is provided, and data types are supported for processing of specific types of measurements.

Every Curve type provides dedicated functions (for analysis, plotting, etc.) as well as specific data visualizations accessible from a drop-down menu in the GUI.

The provided Curve types can be organized in two groups. First the Curve types related to data manipulation and presentation:

Subplot

Used to create an array of axes in the figure, organized in a grid paving the space available based on the gridspec formalism of matplotlib. Unless specified otherwise, the next Curves will be displayed in the newly created axes.

- File subplot: a path to a graph file to be inserted as subplot.

If not provided, the Curve's data will be showed in the created axis.

- Colspan, rowpan: how many grid locations the subplot will fill
- Update subplot: a dict whose elements will to given to the graph loaded by file subplot
- Number cols: how many columns there are in the grid
- Transpose: by default the grid is filled row-by-row. If set the grid is filled column-by-column
- Show id: displays small (a), (b) etc. on top-left corner of each created axes. Coordinates relative to that corner can also be provided (in figure fraction)
- Width ratios, height ratios: list of relative width/heights for the axes in the grid
- Subplots_adjust: margins and spacings of the graphs: [left, bottom, right, top, wspace, hspace]

Inset

Creates new axes in the figure and plot an external graph file inside.

When combining subplots and insets the inset curves must be placed after the subplots.

- Fileinset: a path to a graph file to be inserted as inset.

If not provided, this and the next curve's data will be showed in the created axis.

- Coords: where to place the new axis
- Update inset: a dict whose elements will to given to the graph loaded by fileinset

Image

handles pictures as well as display of matrices

- Plot type: imshow, contour, contour. Choose imshow for pictures.

- Data file: indicate path to a picture or to a data matrix file
- Transpose, rotate: self-explaining. Rotation in degrees for image, by 90° steps for matrices
- Extent: allow zooming on the image. See matplotlib help for imshow for more details
- cmap, vmin, vmax: provides a colormap, and min and max values for matrices
- aspect ratio, interpolation

Math operations

- Addition, subtraction, multiplication and division with a scalar or a Curve. Operations with another Curve perform an interpolation of both Curves on the different x values.
- Negation (0 - Curve) and inversion (1 / Curve) operations
- Swap x and y series

The second group of Curve types is related to data analysis, with a focus on photovoltaics and material science.

EQE external quantum efficiency

Analysis functions

- Bandgap from Tauc $(E * EQE)^2$, manual tuning of the curve fit possible
- Bandgap from derivative
- Bandgap from exact Tauc method $(E * \ln(1 - EQE))^2$
- EQE current, using the AM1.5G solar spectrum
- Fit of low-energy side exponential decay (Urbach tail)
- Loading of the Empa 20.4% cell EQE

Data visualization

- EQE vs eV instead of nm
- Tauc plot $(E * EQE)^2$ vs E

JV, temperature-dependent JV

- Area correction
- Calculation of Voc, Jsc, FF, Eff, MPP
- Fit of the JV curve using diode with 2 resistors model
- Manual tuning of the curve fit possible, as well as resampling to higher number of points.
- logarithmic view $\log(\text{abs}(J - J_{sc}))$

Jsc – Voc pairs

Jsc-Voc pairs at different light intensities and temperatures

- Area correction.
- Fit of Voc vs Jsc: fit the diode ideality factor and J_0 , while separating the data according to the temperature. Limits to Jsc and Voc can be set.
- Separate according to temperature: separate the data source according to the temperature
- Separate Voc vs T: create Voc(T) curves for each illumination intensity. Optionally fit to 0.
- Log10 of absolute value

PL spectrum

- Add arbitrary offset (a dark is probably more suited)
- Subtract dark: dark correction (curve subtraction)
- Convert x axis data from nm to eV
- nm to eV
- nm to cm⁻¹

SIMS

- Some curves are automatically hidden at data loading.
- Edge detection on elemental traces
- Depth calibration
- Adjustment of elemental yield coefficients to match known elemental ratios over some data range
- Computation of arbitrary elemental ratios
- Generation of arbitrary elemental ratio curves (e.g. GGI, Ga+In, etc.)
- Sputter time or depth (once calibrated)

C-V capacitance-voltage

- Fit Mott-Schottky
- Mott-Schottky plot ($1/C^2$ vs V)
- Carrier density N vs V
- N vs apparent depth

C-f capacitance-frequency

Further data processing to be performed by peak selection in derivative visualization and Arrhenius fitting.

- Semilogx
- Derivative

TRPL time-resolved photoluminescence decays

- Add temporal offset, add vertical (background level) offset
- Fit decay with constant plus arbitrary number of exponentials functions, with possibility of fixing some parameters. The residuals can also be shown.
- semilogy

XRF MCA

- Channel to Energy [keV] conversion

6.2. Keywords to Curve

A Curve object contains a dict storing information notably related to plotting. The keywords are not restricted, and only the keywords corresponding to the signature of the matplotlib plotting function will be given to the plotting method.

Please have a look to the matplotlib documentation for a list of possible keywords.

Keyword DetailsExamples

type	<p>Plotting method of Axes.</p> <p>Only a few have been extensively tested, but most should work as far as a specific argument order is not required.</p> <p>== usual methods ==</p> <p>'plot', 'fill', 'errorbar', 'scatter', 'boxplot'</p> <p>== similar to plot ==</p> <p>'semilogx', 'semilogy', 'loglog', 'plot_date', 'stem', 'step', 'tripplot',</p> <p>== (no linespec) ==</p> <p>'bar', 'barbs', 'barh', 'cohere', 'csd', 'fill_between', 'fill_betweenx', 'hexbin', 'hist2d', 'quiver', 'xcorr',</p> <p>== 1D vector data ==</p> <p>'acorr', 'angle_spectrum', 'eventplot', 'hist', 'magnitude_spectrum', 'phase_spectrum', 'pie', 'psd', 'specgram',</p> <p>== other ==</p> <p>'spy', 'stackplot', 'violinplot', 'imshow', 'contour', 'contourf'</p>
linespec	<p>Format string.</p> <p>--or</p>
label	<p>Curve label to be shown in legend.</p> <p>Experiment C</p>
== Display ==	
color	<p>Curve color.</p> <p>r</p> <p>purple</p> <p>[0.5,0,0]</p>
alpha	<p>Transparency.</p> <p>0.5</p> <p>1</p>
linewidth	<p>Linewidth in points</p> <p>1.5</p>
marker	<p>o</p> <p>s</p>
markersize	<p>Size of marker in points.</p> <p>2.5</p>
markerfacecolor	<p>Marker inner color.</p> <p>r</p> <p>[0.5,0,0]</p>
markeredgecolor	<p>Marker border color.</p> <p>r</p> <p>[0.5,0,0]</p>
markeredgewidth	<p>Marker border width in points.</p> <p>1.5</p>
== Offsets ==	
offset	<p>Offset to data.</p>

	-10
	[2, 20]
muloffset	Multipliticative offset to data.
	0.01
	[10, 1e2]
 == For specific curve types ==	
facecolor	Color of "fill" Curve types.
	Fill
	r
	[0.5, 0, 0]
cmap	Colormap, for Curve types which accept this keyword (scatter, etc.)
	afmhot
	inferno
	[[0.91, 0.25, 1], [1.09, 0.75, 1], 'hls']
vminmax	Bounds values for cmap.
	[0, 7]
	[3, '']
colorbar	If not empty display a colorbar according to keyword cmap.
	1
	{'ticks': [-1, 0, 2]}
	{'orientation': 'horizontal', 'adjust': [0.1, 0.1, 0.7, 0.1]}
xerr	x error for curve type "errorbar".
	1
	5
yerr	y error for curve type "errorbar".
	1
	5
 == Misc ==	
labelhide	Use "1" to hide label in the graph.
	1
ax_twinx	Plot curve on secondary axis.
	True
ax_twiny	Plot curve on secondary axis.
	True
linestyle	Use "none" to hide a Curve.
	none
['key', value]	User-defined keyword-values pairs. Will be fed to the plotting method if possible.
	Only necessary in the GUI.
	['fillstyle', 'top']
	['comment', 'a valuable info']

6.3. Automated data processing scripts

A few scripts are provided for data processing. Here is a short description of the required input and of the effect of the scripts.

6.4. Load all files from one folder

Quite obvious

6.5. JV data fit cell-by-cell

- asks for a folder,
- loads all JV data in that folder,
- perform area correction if 2-column cell/area file is found (a search for such file is reported in console at beginning of script execution),
- for each cell, select one dark and one illuminated curve, if possible,
- fit the data with the 1 diode with 2 resistors model

The output the following:

- For each cell, compiled dark+illuminated plots. Have a look to the quality of the fit.
- Compiled database files of the cell properties (all, dark only, illuminated only).
- Graphical sample maps of the different JV parameters values.

6.6. JV data fit separately

Similar the JV data fit cel-by-cell. All JV files in a folder are fitted and the results are compiled in a database file.

6.7. JV sample maps

Asks for a JV database file (either output of JV setup, or of cell-by-cell script above)

Output a graphical representation of each cells JV parameters

6.8. JV boxplots

Creates boxplot graphs from column-organized data files in a given folder.

- asks for a folder,
- open each JV database files present and create boxplots for each relevant JV parameter.

If no file is recognized as a JV database file, tries to aggregate column-wise the data found in each of the data file.

6.9. Processing of C-V data temperature series

Processes a folder containing C-V data as function of temperature (1 curve per file).

Produces a series of graphs (only the last is shown in the user interface)

- asks for a folder,
- generates the following graphs: C vs V, $1/C^2$ vs V (Mott-Schottky), apparent doping vs depth, built-in voltage versus temperature.

6.10. Processing of C-f data temperature series

Processes a folder containing C-f data as function of temperature (1 curve per file).

Produces a series of graphs (only the last is shown in the user interface)

- asks for a folder,
- generates the following graphs: C vs f, derivative(C, log(f)) vs f, impedance angle.

From the aggregated data the inflection points can be selected using the data picker, and the defect energy can be extracted from an Arrhenius relation.

7. Configuration file

Some user preferences can be stored in a configuration file and indicated to the Graph object at creation. A personalized configuration file can also be provided to the GUI when using an application launcher as a second argument (it will be retrieved using `sys.argv[1]`)

The configuration file will be opened by `grapa` as a standard Graph. Whenever needed the software will query for provided values, and use default settings if no suitable keyword is found.

A configuration file may look like this one:

```
# only keywords (first word) matters: comment line are read, maybe stored with
corresponding keyword (e.g. '#'), but never referred to
# repeating a keyword will overwrite the content of first instance

# graph labels default unit presentation: [unit], (unit), / unit, or [], (), /
graph_labels_units []
# graph labels presence of symbols (ie: '$C$' in 'Capacitance $C$ [nF]')
graph_labels_symbols False

# path to inkscape executable, to export in .emf image format. Can be a string, or a list
of strings
inkscape_path["C:\Program Files\Inkscape\inkscape.exe"]

# GUI default colorscales. Each colorscale is represented as a string (matplotlib
colorscales), or a list of colors.
# Each color can be a [r,g,b] triplet, a [r,g,b,a] quadruplet, or a [h,l,s,'hls']
quadruplet. rgb, rgba, hls, hsv colorscale are supported.
GUI_colorscale00 [[1,0,0], [1,1,0.5], [0,1,0]]
GUI_colorscale01 [[1,0.3,0], [0.7,0,0.7], [0,0.3,1]]
GUI_colorscale02 [[1,0.43,0], [0,0,1]]
GUI_colorscale03 [[0.91,0.25,1], [1.09,0.75,1], 'hls']
GUI_colorscale04 [[0.70,0.25,1], [0.50,0.75,1], 'hls']
GUI_colorscale05 [[1,0,1], [1,0.5,1], [0.5,0.75,1], 'hls']
GUI_colorscale07 'inferno'
GUI_colorscale10 'gnuplot2'
GUI_colorscale11 'viridis'
GUI_colorscale12 'afmhot'
GUI_colorscale13 'YlGn'

# default saving image format
save_imgformat .png
```

8. How to read my own data files ?

You will need to create in folder datatypes a file with name graphMyfile.py (must start with graph with a small g). This file contains a class GraphMyfile (capital G, same ending as file name) that inherits from class Graph.

The class must contain at least 1 attribute and 2 methods:

- `FILEIO_GRAPHTYPE`: some string identifier, for internal use.
- `isFileReadable(cls, fileName, fileExt, line1="", line2="", line3="", **kwargs)`

Must return True is the file can be opened using your class, otherwise False

- `readDataFromFile(self, attributes, **kwargs)`

Actually opens the file, which can be access from `self.filename`.

`attributes` is a dict which can be given to the constructor of the Curves.

8.1. Example:

Let us assume your data file is organized as follows (file `howto/example_sinx_x.txt`):

```
This is my own data format
My label
-29.9 -0.033394483
-29.7 -0.033316063
-29.5 -0.03189937
-29.3 -0.029182928
-29.1 -0.025257719
-28.9 -0.020264268
-28.7 -0.014387719
-28.5 -0.007851075
```

Such a column-organized file can very likely be opened using the provided methods. Still, you may want to add your own stuff there.

In file `howto/graphMydata.py` is provided an example how such a file can be parsed. To have to example work just copy the file into the datatypes folder. The class is organized as follows:

```
import numpy as np
from grapa.graph import Graph
from grapa.curve import Curve

class GraphMydata(Graph):

    # will be used by grapa code
    FILEIO_GRAPHTYPE = 'MyCurve'

    # 3-element list, default x and y axis labels: [text, symbol, unit]
    AXISLABELS = [['theta', '\theta', 'unit'], ['value', '', 'unit']]

    @classmethod
    def isFileReadable(cls, fileName, fileExt, line1='', line2='', line3='', **kwargs):
        """
        This function returns True if the file can be opened with this class.
        Please be selective so as not to open other file formats by mistake.
        Are provided the file name, extension, and the 3 first lines of the file
        """
        if fileExt == '.txt' and line1 == 'This is my own data format':
            return True
        return False

    def readDataFromFile(self, attributes, **kwargs):
```

```

"""
This function parses your files
The file can be opened using open(self.filename, 'r')
"""
# interpret headers - here only attribute 'label'
attrs = {}
f = open(self.filename, 'r')
f.readline()
attrs['label'] = f.readline().strip()
f.close()
# read data
data = np.array([[np.nan], [np.nan]])
kw = {'skip_header': 2, 'usecols': [0, 1]}
try:
    data = np.transpose(np.genfromtxt(self.filename, **kw))
except Exception as e:
    if not self.silent:
        print('WARNING cannot read file', self.filename)
        print(type(e), e)
# create Curve object(s)
try:
    from grapa.datatypes.curveMycurve import CurveMycurve
    self.append(CurveMycurve(data, attributes))
except ImportError:
    self.append(Curve(data, attributes))
self.curve(-1).update(attrs) # file content may override default attributes

# cosmetics
# some default settings
self.update({'ylim': [-1.2, 1.2],
            'xlabel': self.formatAxisLabel(GraphMydata.AXISLABELS[0]),
            'ylabel': self.formatAxisLabel(GraphMydata.AXISLABELS[1])})

```

9. How to define my own Curve type ?

You'll need to create in folder datatypes a file named curveMycurve.py (file name must start with curve with a small c). The file must contain a class CurveMycurve (capital C, same ending as the file name) inheriting from class Curve.

9.1. Example

An example is provided in file howto/curveMycurve.py. To have the example work just place a copy of the example files in the folder datatypes. The structure is as follows:

```
import numpy as np
from grapa.curve import Curve

class CurveMycurve(Curve):

    # so the Curve class information is retrieved when opening an existing file
    CURVE = 'Curve mycurve'

    def __init__(self, data, attributes, silent=False):
        """
        Constructor with minimal structure: Curve.__init__, and then set the
        'Curve' parameter.
        """
        Curve.__init__(self, data, attributes, silent=silent)
        self.update ({'Curve': CurveMycurve.CURVE})

    # GUI RELATED FUNCTIONS
    def funcListGUI(self, **kwargs)
        """ Fills in the Curve actions specific to the Curve type """

    def alterListGUI(self)
        """ Determines the possible data visualisations. """

    # data transform function
    def y_derivative(self, index=np.nan, xyValue=None)

    # data transform function
    def y_abs(self, index=np.nan, xyValue=None)

    # function called by user
    def statsAndAddition(self, what)

    # a Curve type specific function printing help for the user
    def printHelp(self)
```

10. A few more details...

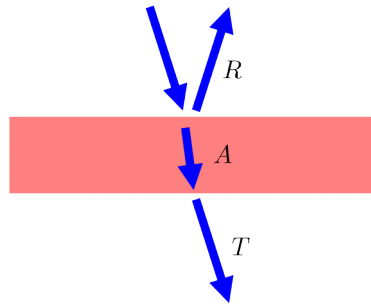
10.1. CurveSpectrum

Curve Spectrum offers functions to compute the optical absorption coefficient α from reflectance and transmittance curves of layers. The resulting curve is in units of $[\text{cm}^{-1}]$. The computation of α is based on the Beer-Lambert law of an estimate of the light absorption in the layer.

Warning: The calculations presented below rely on various assumptions and simplifications. For more accurate data treatment, various analytical approaches were developed in the literature. The use of dedicated optical modelization software is also recommended.

Beer-Lambert law

R , A and T denote the reflectance, absorptance and transmittance of the layer, and d the layer thickness.



$$1 = R + A + T$$

Figure 1: Schematics of the light propagation in a sample consisting of a single layer. The reflection at surfaces are here neglected.

The Beer-Lambert law describes the attenuation of a propagating beam in a medium, and is expressed as $I(d) = I_0 \exp(-\alpha d)$, with I_0 the initial intensity and α the attenuation coefficient.

Assuming the reflection mostly takes place at the first interface (which is wrong, but here a suitably good approximation when the light absorption is more important than reflections), one obtains:

$$T = I(d) = (1 - R) \exp(-\alpha d)$$

$$\Rightarrow \alpha = \frac{-1}{d} \ln \frac{T}{1 - R}$$

Presence of a (weakly) absorbing substrate

In real-life measurements, the layer of interest is generally on top of a substrate. The reflectance and transmittance can be characterized for both the naked substrate and the layer on substrate. One would need to perform a "virtual" measurement, where only the layer of interest would be characterized. An estimate to the optical absorption coefficient α can be obtained as follows.

Again, we assume that the reflectance only occurs at the first interface. This is mostly satisfied if the refractive index of the layer of interest is higher than that of the substrate: ZnO on soda-lime glass (SLG) for example. With a relatively low value of n around 1.5, SLG is a relatively good substrate. Conversely Si has a very high refractive index and thus large amplitude of reflection at interfaces, and will not well satisfy this hypothesis even far in the infrared.

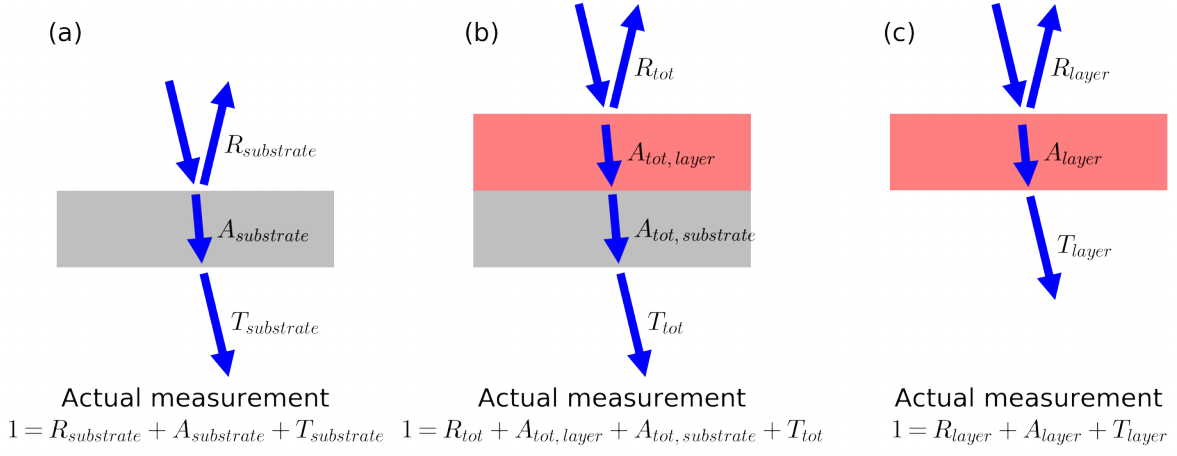


Figure 2: Schematics of light propagation in (a) a substrate, (b) a substrate covered with a layer, and (c) ideal optical measurement on a free-standing layer. The reflection at interfaces

Then, assuming that fraction of (transmitted light) over (incoming light) in the substrate are equal for both measurements :

$$\frac{T_{\text{substrate}}}{1 - R_{\text{substrate}}} = \frac{T_{\text{tot}}}{1 - R_{\text{tot}} - A_{\text{tot, layer}}}$$

$$\Leftrightarrow A_{\text{tot, layer}} = 1 - R_{\text{tot}} - \frac{T_{\text{tot}}}{T_{\text{substrate}}} (1 - R_{\text{substrate}})$$

Finally, assuming $R_{\text{layer}} = R_{\text{tot}}$, and assuming $A_{\text{layer}} = A_{\text{tot, layer}}$,

$$T_{\text{layer}} = 1 - R_{\text{layer}} - A_{\text{layer}} = T_{\text{tot}} \frac{1 - R_{\text{substrate}}}{T_{\text{substrate}}}.$$

It follows that:

$$\alpha = \frac{-1}{d} \ln \frac{T_{\text{layer}}}{1 - R_{\text{layer}}} = \frac{-1}{d} \ln \frac{T_{\text{tot}} (1 - R_{\text{substrate}})}{(1 - R_{\text{tot}}) T_{\text{substrate}}}.$$

Warning: This data treatment only provides an estimation of α . For accurate results please use a more refined analytical treatment, or a dedicated optical modelization software.